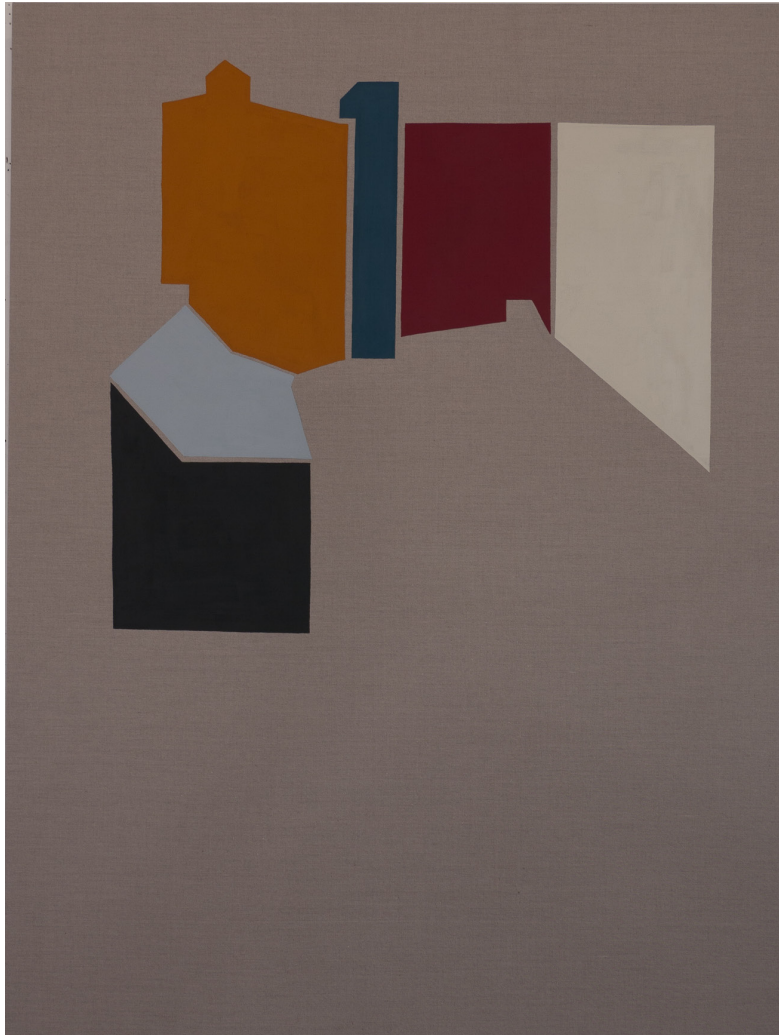


LIV METTE LARSEN

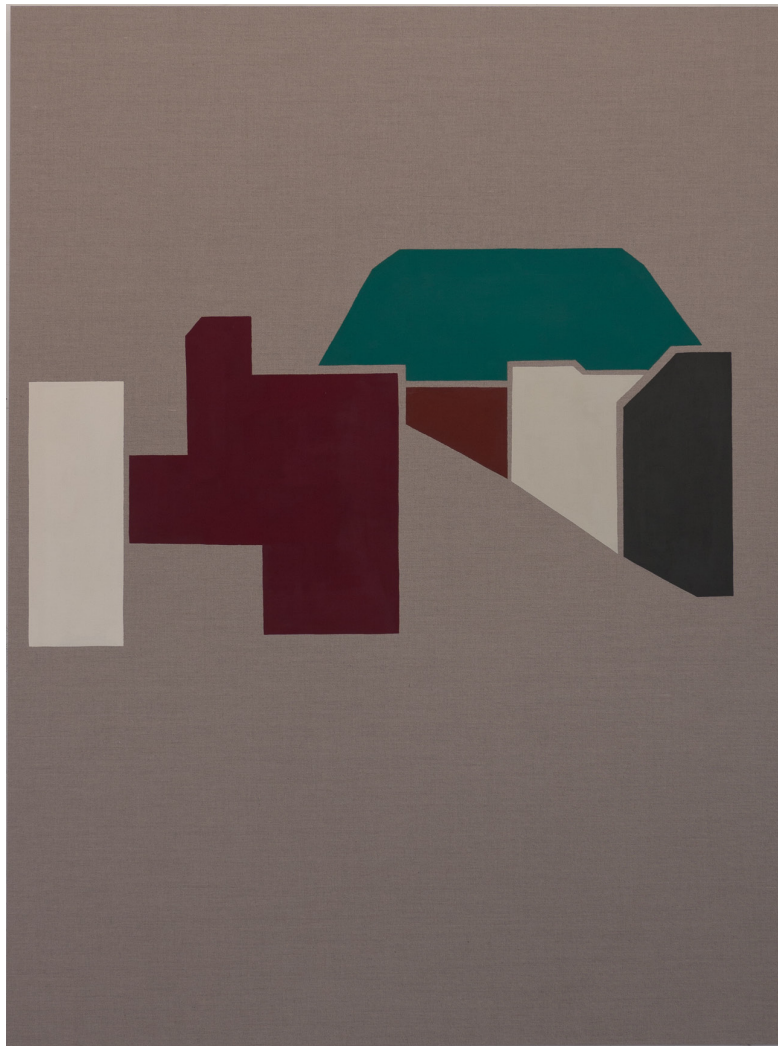
Bushwick Skyline Paintings
NY 2012/ 13



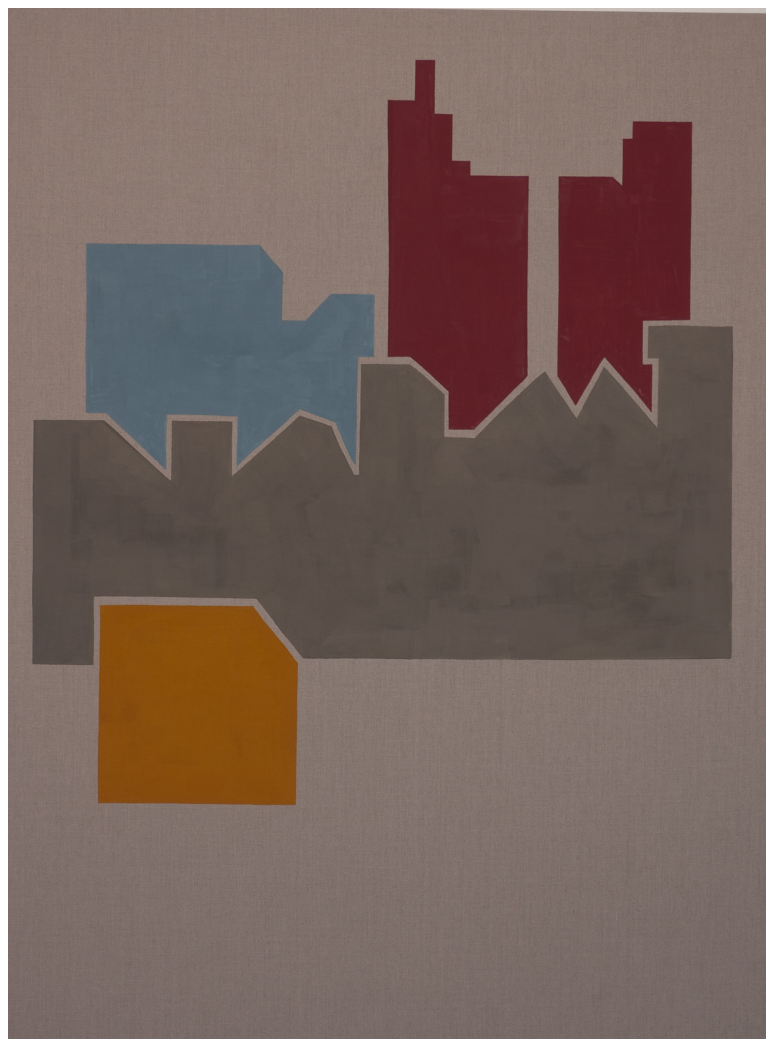
Bushwick Skyline XVI
79x59 inch, 2013



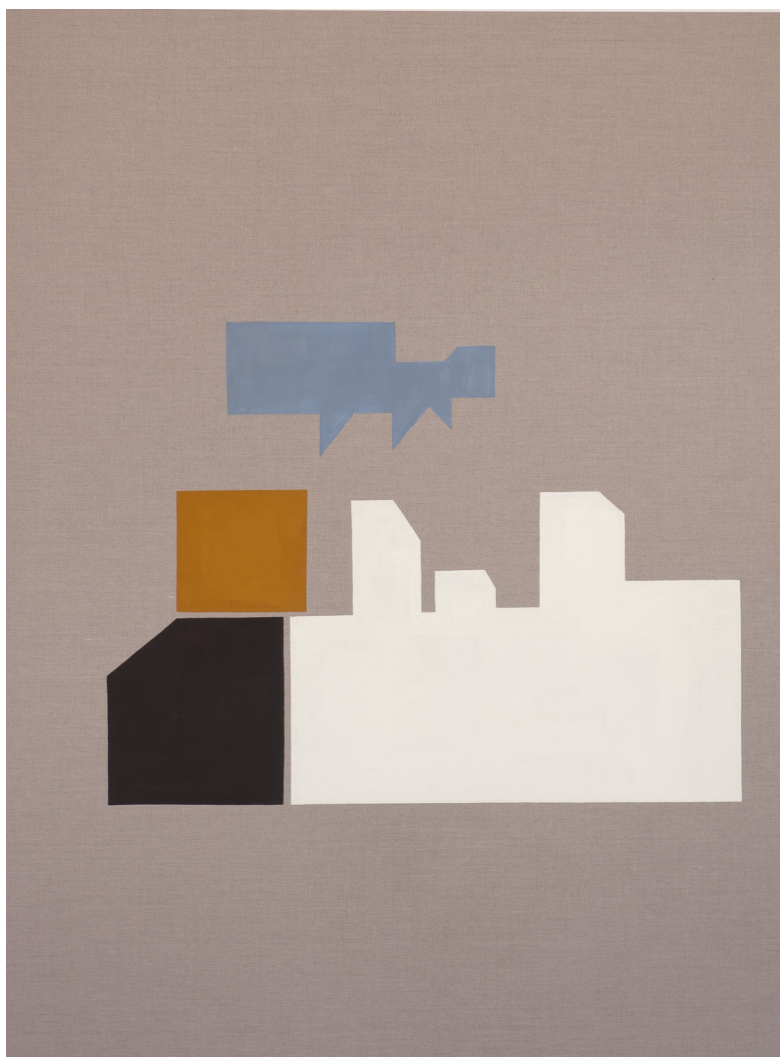
Bushwick Skyline XVII
79x59 inch, 2013



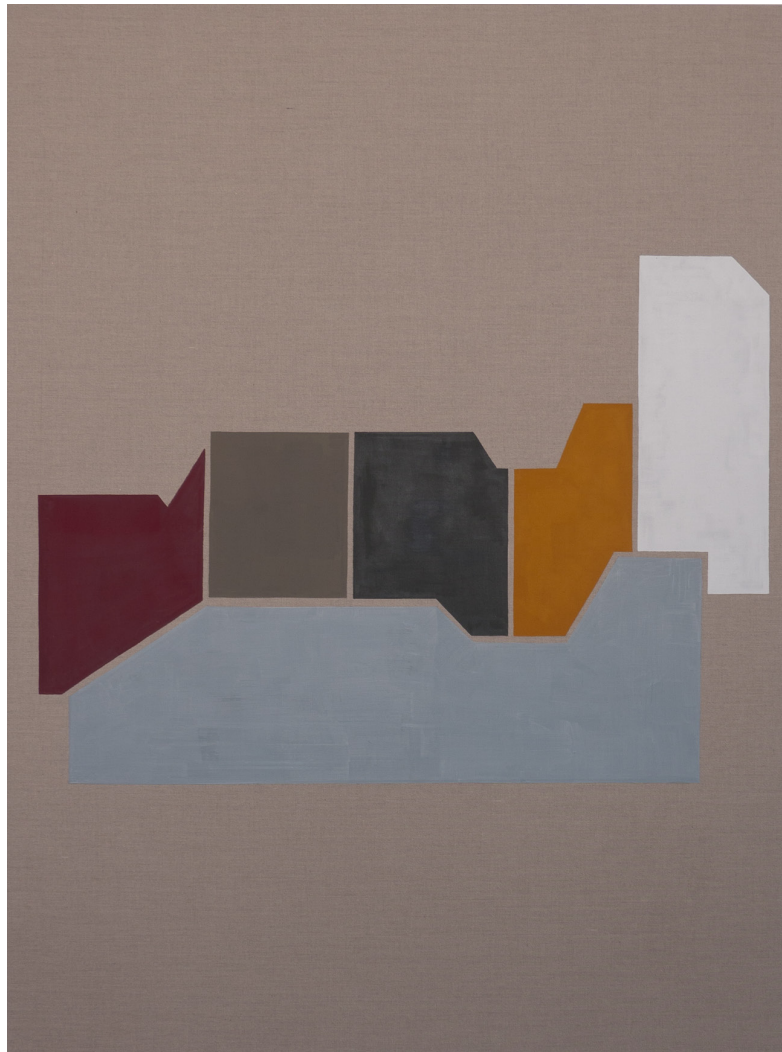
Bushwick Skyline XVIII
79x59 inch, 2013



Bushwick Skyline XIX
79x59 inch, 2013



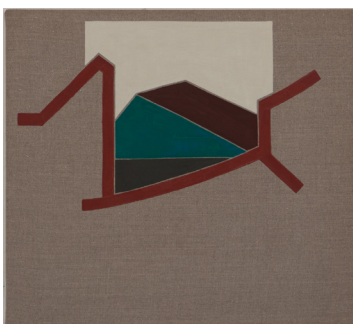
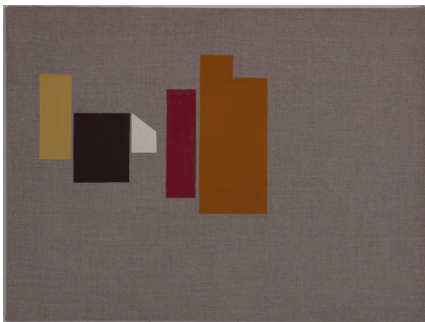
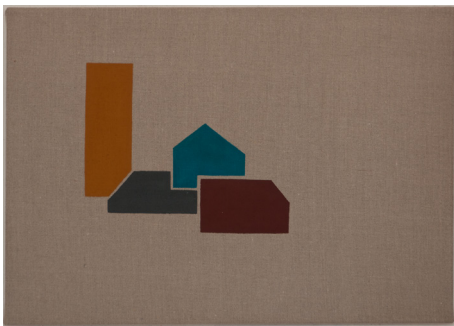
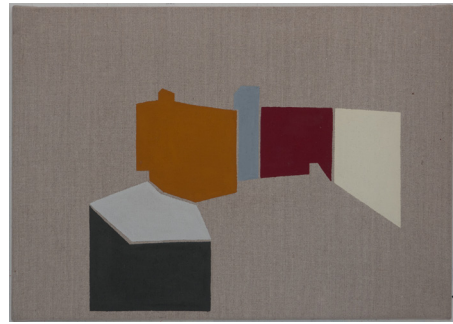
Bushwick Skyline XX
79x59 inch, 2013



Bushwick Skyline XXI
79x59 inch, 2013



Bushwick Skyline I-VIII
17x24 inch each, 2012



Bushwick Skyline IX-XIV
17x24 inch each 2012

LIV METTE LARSEN : SCRAP METAP & BUSHWICK SKYLINE PAINTINGS

In a career spanning more than thirty years, Larsen's intuitive paintings, watercolors and drawings establish an energetic dialogue about perception and the transitory moments of life. Working primarily in monochrome silhouettes, she employs alternating scales to reconstruct the subjective realities of her narratives. Instead she proposes an inductive perspective, abstracting people and things from her daily encounters that reflect the circumstances of Larsen's practice. Her paintings dissolve the boundaries between figuration and abstraction, with objects transforming fluidly into organic geometric forms. She paints with densely applied egg tempera to create the illusion of volume to allow isolated elements to become vivid archetypal forms and graphic signs.

Throughout her recent works, urban space and the ways in which people engage with it have been a primary concern. Drawing inspiration from the fleeting moments of everyday life, figures are devoid of context, either standing alone or with blocks of color. In *Big Men* (2011), heavily bundled men isolated against the canvas appear to be engaged in a ritualistic dance, alternately moving closer and further away. Likewise in *Berlin Blue Abstract Walking* (2010), an unknown woman, identifiable only by her profile, poses in each canvas. Reduced to strictly physical cues, each stance ranges from contemplative to interrogative. This series takes its title from a specific blue that was discovered by eighteenth-century alchemists working in the Prussian capital.

From anonymous figures to pared-down industrial environments, she seeks to integrate the identifying characteristics of her location with her works. Larsen approaches the subway as a linear system reminiscent of Mondrian's urban grids while in *Scrap Metal* and *Scrap Metal Heap* (2011) Larsen records the scrap metal heaps that were immediately outside of the window of her Brooklyn studio. Reduced to abstract swathes of bright yellow, blue, orange, and green, the utility of each jagged piece dissolves into an amoeboid shape. In *Smith Street* (2011), the blurred relationship between figure and ground disorients perspective. Although Larsen makes reference to a specific location, her paintings examine the fundamental relationships between people and their surroundings, preserving initial observations and glimpses to allow for prolonged reflection.

Liv Mette Larsen has exhibited internationally for over three decades and her work is included in major public and private collections.

Her most recent series is called *Bushwick Skyline* and will be exhibited in a garage on 386 Jefferson Street, Brooklyn NY 11237 during *Bushwick Open* may 30 - june 2 2013.

© Courtesy the artist and Galerie Kai Hilgemann, Berlin



Scrap Metal Pieces I-XXIV
 eggtempera on canvas
 9,9x13,8 inch each, 2011
 Caldic Collection, The Netherlands

LIV METTE LARSEN

Scrap Metal New York Paintings 2011



Scrap Metal Heap VIII
eggtempera on canvas
200x150cm, 2011



Scrap Metal Heap I
eggtempera on canvas
200x150cm, 2011



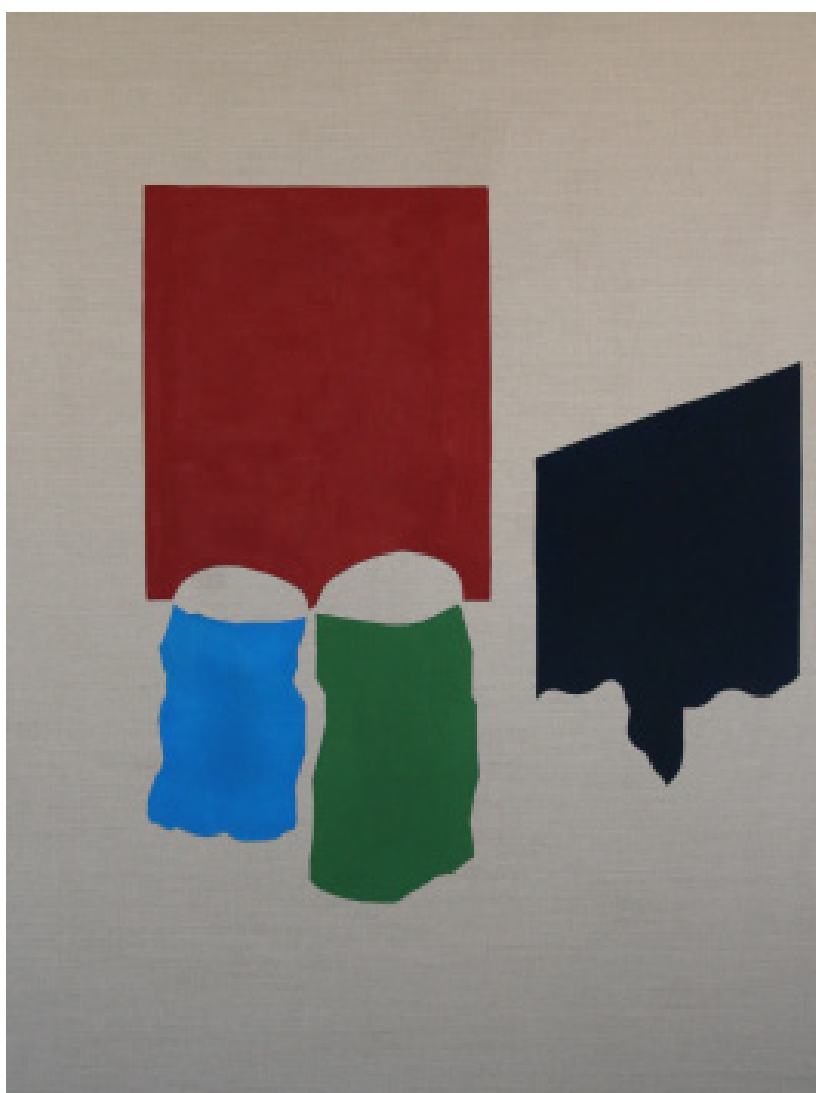
Scrap Metal Heap II
eggtempera on canvas
200x150cm, 2011



Scrap Metal Heap III
eggtempera on canvas
200x150cm, 2011



Scrap Metal Heap IV
eggtempera on canvas
200x150cm, 2011



Scrap Metal Heap V
eggtempera on canvas
200x150cm, 2011



Scrap Metal Heap VI
eggtempera on canvas
200x150cm, 2011



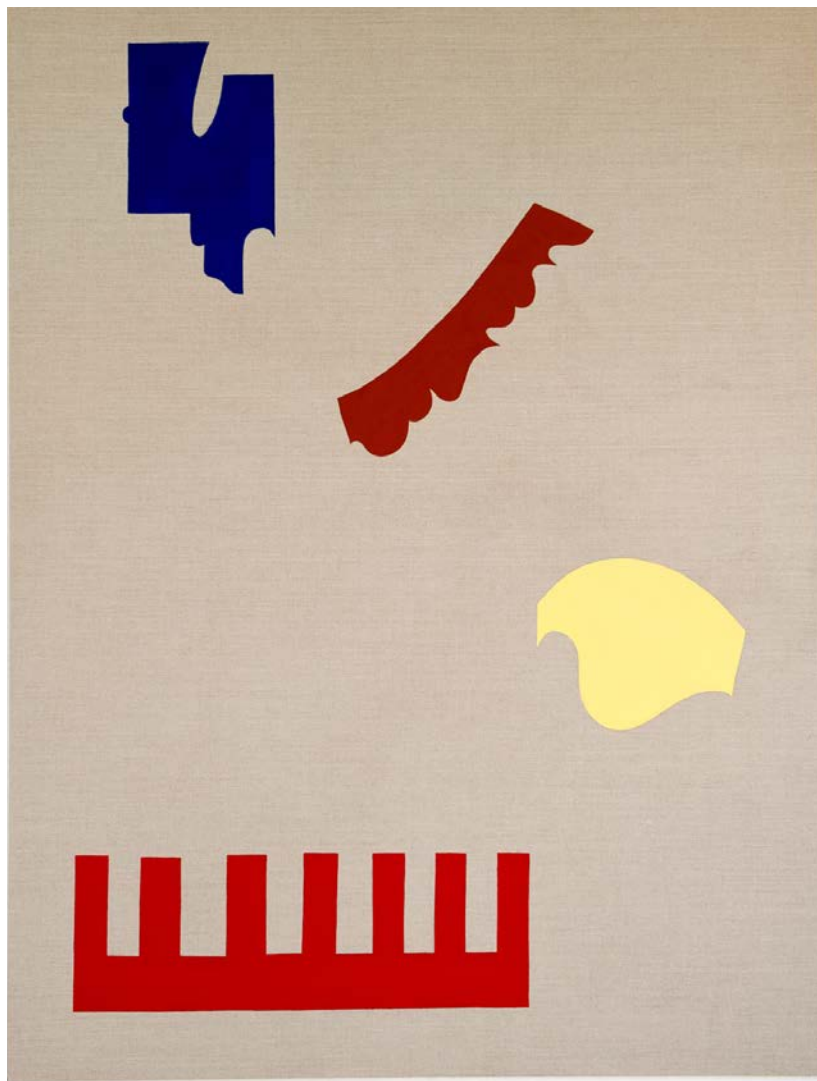
Scrap Metal Heap VII
eggtempera on canvas
200x150cm, 2011



Scrap Metal Heap VIII
eggtempera on canvas
200x150cm, 2011



Scrap Metal Heap IX
eggtempera on canvas
200x150cm, 2011



Scrap Metal Heap X
eggtempera on canvas
200x150cm, 2011



Scrap Metal Pieces I-IV
eggtempera on canvas
each 61x43cm, 2011



Scrap Metal Pieces V-VIII
eggtempera on canvas
each 61x43cm, 2011

LIV METTE LARSEN

1952

Born in Oslo, Norway

Lives and works in Berlin and New York

1974–77

SHKS School for Arts and Crafts Oslo

1978–84

Hochschule der Künste (UDK) Berlin

1984

Masterclass student with Prof.Fussmann

Cofounder of producers gallery Wissarth, Berlin

Grant of the Senate's Cultural Affairs Department, Berlin 1992

Grant, Vederlagsfondet, Norway 1994 / 1996 / 1997 / 2006

SOLO EXHIBITIONS (selection)

2013

Bushwick Skyline Bushwick Open Studios, Brooklyn New York

Slippery When Wet SUGAR, Brooklyn New York, with Gwendolyn Skaggs

Bushwick Paintings, Galerie Kai Hilgemann, Berlin

2012

Rose Burlingham Gallery, with Matt Magee, New York

2011

Scrap Metal New York Paintings, Helac Fine Art, New York

360° scrap metal pieces, Galerie Kai Hilgemann, with Nadine Fecht

2010

Berliner Blau > catalogue

2008

Plaza, Galerie Kai Hilgemann, Berlin

Renaissance Walking, Galeria Fruela, Madrid

2007

Berliner Vertikale, Galerie Kai Hilgemann, Berlin > catalogue

Kunst aus Norwegen, with Per Berntsen, Schwerin, Germany

2006

Schriftportraits, Literaturhaus, Salzburg, Austria

2005

Rød, gul, blå, Asker Kunstverein, Asker, Norway with Bente Geving > catalogue

Grosse Vertikale, Galerie Kai Hilgemann, Berlin

2003

Johann-Wolfgang-Goethe Universität Frankfurt/ Main, with Tone Avenstroup

2002

Fragmentierungen, Kunstsammlung Neubrandenburg > catalogue

2001

In Residence, Kunsternes Hus, Oslo with Tone Avenstroup > catalogue

Asker, Galerie Kai Hilgemann, Berlin with Bente Geving

2000

Galerie U Kamene, Cheb, Czechia

Vestfold Kunstnersenter, Tønsberg, Norway with H.E. Wiegand > catalogue

Schriftportraits, Galerie Kai Hilgemann, Berlin > catalogue

Collections & prizes

various international private & corporate collections

2012

Caldic Collection, Wassenaar, The Netherlands

2011

Collection Ana Botella, Madrid

2009

Sørlandets Kunstmuseum, Kristiansand, Norway

Norwegian Embassy, Berlin

2008

Collection Ignacio Munoz, Madrid

Collection Carolina Masaveu

2007

Asker commune, Norway

2005

Collection Ernst&Young, Frankfurt/Main, Germany

Sparebanken Møre Kunstsamling, Ålesund, Norway

2004

Collection Kreditanstalt für Wiederaufbau,
Frankfurt/Main, Germany

2002

Sørlandets Kunstmuseum, Kristiansand, Norway

Ostseesparkasse Rostock, Germany

1.Prize for Puzzle, Robert-Jungk-High-School, Berlin

Arts & Architecture Project

2001

Nationalgalerie, Oslo, Norway

1998

Gesellschaft für Gegenwartskunst Augsburg, Germany

1995

Marburger Kunstverein, Germany

Artothek Masserberg, Germany

Museum Lüdenscheid, Germany

1994

Norsk Kulturråd, Norway

1993

Neuer Berliner Kunstverein, Berlin

1990

Aalesund Kunstforening, Norway